


Chocolate World®

INDUSTRIAL MOULDS CATALOGUE

April 2023 © Chocolate World, Hoboken, Antwerp.

Every care has been taken in the composition of this catalogue. Chocolate World accepts no liability for possible errors. All rights reserved.

No part of this publication may be reproduced, stored in an automated database and/or made public in any form or in any way, either electronically, mechanically or in any other way without the prior written permission of Chocolate World.


 Chocolate World is the undisputed market leader in the field of manufacturing polycarbonate moulds for artisan and semi-industrial chocolatiers.

With over 37 years of experience as a direct producer, Chocolate World offers the highest possible quality. We guarantee service, follow-up, exclusive work, transparent communication with a customer-oriented mindset.

Since 2008, Chocolate World also became a direct machinery producer of tempering machines up to 80 kg tank capacity, related options, enrobers and professional cooling tunnels with 300 mm belt width. The combination of our 2 in-house factories makes Chocolate World a unique player in our market and allows our company to expand and invest in new production technologies every year.

With this catalogue we want to highlight our range of industrial and one-shot polycarbonate moulds for industrial chocolatiers. In addition to our well-known 135x275 mm and 175x275 mm series, Chocolate World now offers frame moulds up to 600 mm frame length and 400 mm frame width, for automated moulding lines for many different brands.

Contact our specialists from our sales department for possibilities for your exclusive projects as an industrial chocolatier.

 Chocolate World is de onbetwiste marktleider op het gebied van polycarbonaat vormen voor artisanale en semi-industriële chocolatiers.


Met meer dan 37 jaar ervaring als directe fabrikant biedt Chocolate World de hoogst mogelijke kwaliteit aan. Wij staan garant voor service, opvolging, exclusief werk, transparante communicatie en klantgerichtheid.

Sinds 2008 is Chocolate World alsook machinefabrikant van tempereertoestellen tot en met 80 kg kuipinhoud, overtreklijnen en professionele koeltunnels met 300 mm bandbreedte. De combinatie van onze 2 fabrieken maakt Chocolate World uniek als speler op onze markt. Dit laat onze firma toe om jaarlijks gestaag uit te breiden en te investeren in nieuwe productiemachines en technologieën.

Met deze catalogus willen we graag onze industriële vormen en one-shot polycarbonaat vormen voor industriële chocolatiers in de schijnwerpers zetten.

Naast onze gekende 135x275 mm en 175x275 mm series biedt Chocolate World vanaf heden ook kadervormen tot 600 mm kaderlengte en 400 mm kaderbreedte aan, voor geautomatiseerde mouleerlijnen voor tal van verschillende merken.

Contacteer onze specialisten en verkoopdienst voor de mogelijkheden van uw exclusieve projecten als industriële chocolatier.

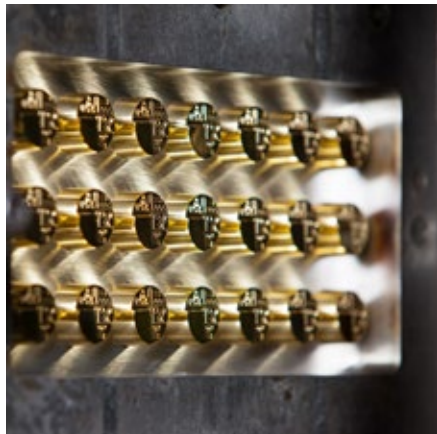
 Chocolate World est le leader incontesté du marché des moules en polycarbonate pour les chocolatiers artisanaux et semi-industriels. Avec plus de 37 ans d'expérience en tant que fabricant direct, Chocolate World offre la meilleure qualité.

Depuis l'année 2008, Chocolate World fabrique également des tempéreuses d'une capacité allant jusqu'à 80 kg, des lignes d'enrobage et des tunnels de refroidissement professionnels d'une largeur de bande de 300 mm. La combinaison des deux chaînes de productions fait de Chocolate World un acteur unique sur le marché. De plus, il garantit un service, un suivi, un travail exclusif, une communication transparente et une orientation client. En tant que dynamique et innovatrice, l'entreprise s'assure de se développer constamment et d'investir à base régulière dans de nouvelles machines et technologies de production.

Avec ce catalogue, nous souhaitons mettre en avant nos moules industriels et nos moules one-shot en polycarbonate pour les chocolatiers industriels.

En plus de nos séries bien connues de 135x275 mm et 175x275 mm, Chocolate World propose désormais des moules en cadre jusqu'à 600 x 400 mm. Cette taille est compatible avec des lignes de moulage automatisées de nombreuses marques différentes.

Contactez notre service de vente pour vos projets exclusifs en tant que chocolatier industriel.



AVAILABLE EXTERNAL MOULD SIZES

S1000: 275 x 135 mm Height 24 - 40 mm
S2000: 275 x 175 mm Height 24 - 40 mm

B Series: 275 x 205 mm Height 30 - 35 mm
C Series: 300 x 205 mm Height 30 mm
D Series: 300 x 225 mm Height 30 mm

INDUSTRIAL MOULD SERIES

I Series 380 x 295: 380 x 295 mm Height 30 mm
I Series 425 x 275: 425 x 275 mm Height 30 mm
I Series 600 x 200: 600 x 200 mm Height 30 mm
I Series 600 x 205: 600 x 205 mm Height 30 mm

CW POLYCARBONATE MOULDS



MATERIALS AND SPECIFICATIONS

- Made in Belgium
- Over 30 years manufacturing experience
- 100% virgin polycarbonate
- BPA-free moulds available upon request
- Exquisite polished tooling
- Sandblasted, and visual structural effects
- High-precision CNC milling
- Largest assortment worldwide, over 1500 standard shapes
- Market-oriented collections
- Traditional and modern designs
- ISO certified
- Human quality control
- High-level after-treatment procedure
- Full traceability due to cutting edge laser technology
- Colouring batch upon request
- Industrial moulds suitable for all kinds of production lines



MATERIAAL EN KENMERKEN

- Van Belgische makelij
- Meer dan 30 jaar ervaring als producent
- 100% niet eerder verwerkt polycarbonaat
- BPA-vrije vormen beschikbaar op aanvraag
- Gepolijste matrijzen van topkwaliteit
- Gezandstraalde en visuele structuureffecten
- CNC-freestechieken met hoge nauwkeurigheid
- Grootste assortiment wereldwijd, meer dan 1500 standaardvormen
- Marktconforme collecties
- Traditionele en moderne ontwerpen
- ISO-gecertificeerd
- Kwaliteitscontrole uitgevoerd door deskundigen
- Hoogwaardige nabehandelingsprocedure
- Volledige traceerbaarheid dankzij toonaangevende lasertechnologie
- Gekleurde batch verkrijgbaar op aanvraag
- Industriële vormen geschikt voor alle productielijnen



MATÉRIAUX ET SPÉCIFICATIONS

- Fabriqué en Belgique
- Plus de 30 ans d'expérience
- Polycarbonate vierge à 100 %
- Moules sans bisphénol A disponibles sur demande
- Outillage poli de toute beauté
- Sablé, avec effets visuels structurels
- Fraisage CNC de haute précision
- La plus large gamme au monde, avec plus de 1500 formes standards
- Collections fondées sur le marché
- Designs traditionnels et modernes
- Certifié ISO
- Contrôle de qualité fait main
- Procédure de post-traitement de haut niveau
- Traçabilité totale grâce à la technologie de pointe au laser
- Lots de colorants sur demande
- Moules industriels adaptés à toute ligne de production



Production of polycarbonate moulds
ISO 9001:2000

EXCLUSIVES FRAME MOULDS

EXCLUSIVE FRAME MOULDS

You want to make an instant impact on the market with chocolates of your own design?

Our in-house specialist team of engineers and consultants is happy to help you along the way. With over 37 years of experience in designing and producing moulds and shapes, Chocolate World is recognised as setting the standard in this sector.

Thanks to the most sophisticated techniques and software, we can execute your ideas with high precision, without losing sight of your wishes. It will always be you, the customer, who decides on the size, colour and reference of your personal mould. Flexibility is one of our major selling points. We look at each project with one goal in mind: deliver a final product of the highest quality, customised completely by our client.

We will keep you up to date at every step along the way in order to achieve the final result you had in mind.



EXCLUSIEVE KADERVORMEN

Wilt u de markt rechtstreeks betreden met zelfontworpen chocolade?

Ons eigen gespecialiseerde team moules en cadre ingenieurs en consultants staat paraat om u hierbij te helpen. Met meer dan 37 jaar ervaring in het ontwerpen en produceren van vormen en figuren, wordt Chocolate World beschouwd als dé toonaangevende speler binnen de sector.

Met behulp van de meest geavanceerde technieken en software, voeren we uw ideeën zo nauwkeurig mogelijk uit, zonder daarbij uw behoeften uit het oog te verliezen. U zal als klant altijd de eindbeslissing nemen over de afmetingen, kleur en referentie van uw gepersonaliseerde vorm. Flexibiliteit is één van onze belangrijkste verkoopstreeven. We hebben bij elk project maar één doel voor ogen: een volledig door onze klant gepersonaliseerd eindproduct van topkwaliteit afleveren.

We houden u tijdens het proces van elke stap op de hoogte om zo tot het uiteindelijke resultaat te komen dat u voor ogen had.



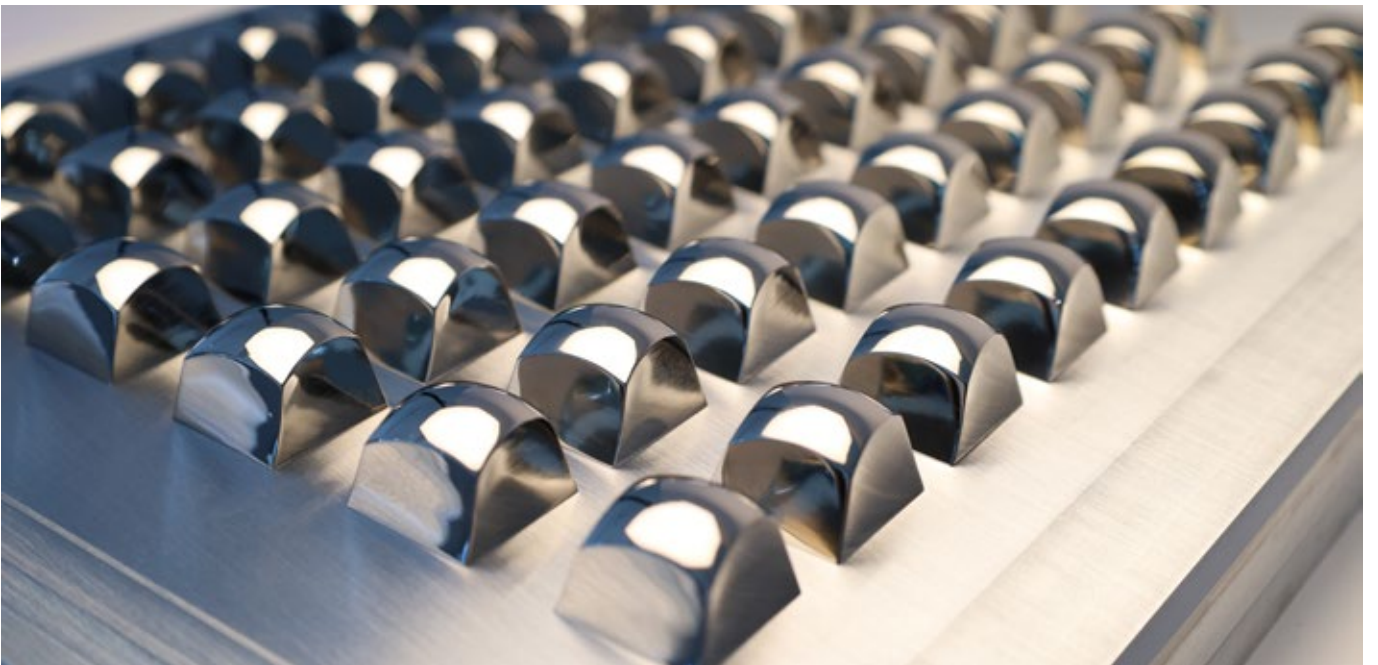
MOULES ENCADRE EXCLUSIFS

Souhaitez-vous surprendre instantanément le marché avec des chocolats de votre propre création ?

Nos ingénieurs et consultants internes seront heureux de vous assister tout au long du processus. Avec plus de 37 ans d'expérience en conception et production de moules et de formes, Chocolate World est reconnue pour être la référence du secteur.

Grâce aux techniques et logiciels les plus sophistiqués, nous pouvons donner vie à vos idées avec grande précision, sans perdre de vue vos desideratas. Les décisions portant sur la taille, la couleur et la référence de votre moule personnel resteront toujours votre prérogative. La flexibilité est l'un de nos principaux arguments de vente. Nous examinons chaque projet avec un seul objectif à l'esprit : fournir un produit final de la plus haute qualité, entièrement personnalisé par notre client.

Nous vous tiendrons au courant à chaque étape du développement, afin que le résultat final corresponde parfaitement à ce que vous imaginiez.





2 WAYS TO MAKE YOUR EXCLUSIVE PROFESSIONAL POLYCARBONATE FRAME MOULDS

1. FULL-EXCLUSIVE CONCEPT

We simply design your chocolate, your idea, your dream. Any conical shape or size is possible upon request. This is the perfect solution for both artisan and industrial producers, who know the design they want, and how they want it. This is the most professional exclusive polycarbonate mould service you will find in the market these days.

The options are endless, we work together with you to create that perfect mould you have always wanted. With a minimum order quantity of 50 pieces, this is an ideal way to promote your own design.

2. SEMI-EXCLUSIVE CONCEPT

If you want to personalise an existing mould with your logo or brand name, this is the perfect cost-effective solution for the same minimum order quantity of 50 pieces. Choose from the selected range of moulds we think are best suited for this purpose, and we can work from there.

OPTIONS

→ Sandblasted versus polished effects

These different effects are just a matter of preference. Some chocolates will look lovely with a polished finish, while others are better suited to a more sandblasted finish. It is up to you to choose which one you prefer. These visual effects can be applied to any kind of tooling.

→ Centre systems (for full and semi exclusive concept)

At Chocolate World we offer our customers the option of centring pins, to ensure faultlessly-balanced double moulds.



2 MOGELIJKHEDEN OM UW EXCLUSIEVE, PROFESSIONELE POLYCARBONAAT KADERVORMEN TE MAKEN

1. VOLLEDIG EXCLUSIEF CONCEPT

Wij ontwerpen eenvoudigweg uw chocolade, uw idee, uw droom. Conische vormen zijn in verschillende afmetingen op aanvraag verkrijgbaar. Dit is de perfecte oplossing voor zowel ambachtelijke als industriële producenten die precies weten welk ontwerp ze willen. Dit is het meest professionele, exclusieve aanbod voor polycarbonaat vormen dat u vandaag de dag op de markt kan vinden.

De mogelijkheden zijn legio. Wij bundelen samen met u onze krachten om die ene perfecte vorm te ontwerpen waarvan u altijd al had gedroomd. Dit is de ideale manier om uw eigen ontwerp te promoten. De minimale afname hiervoor bedraagt 50 stuks.

2. SEMI-EXCLUSIEF CONCEPT

Wilt u een bestaande vorm met uw logo of merknaam personaliseren, dan is dit de perfecte kosteneffectieve oplossing tegen diezelfde minimale afname van 50 stuks. Kies uit de door ons zorgvuldig geselecteerde vormen waarop we ons kunnen baseren voor de verdere uitwerking.

OPTIES

→ Zandstraal- versus polijsteffecten

Deze verschillende effecten zijn een kwestie van voorkeur. Sommige chocoladeproducten zien er mooi uit met een gladde afwerking, terwijl andere er beter uitzien met een gezandstraalde afwerking. De keuze is volledig aan u. Deze visuele effecten kunnen worden toegepast op elk type vorm.

→ Centreersystemen

Bij Chocolate World bieden wij onze klanten centreerpinnen aan om ervoor te zorgen dat dubbele vormen perfect uitgelijnd zijn.



■ ■ 2 FAÇONS DE PRODUIRE VOS MOULES EN CADRE PROFESSIONNELS EXCLUSIFS EN POLYCARBONATE

1. CONCEPT TOTALEMENT EXCLUSIF

Nous élaborons simplement votre chocolat, votre idée, votre rêve. Toute forme ou taille conique est possible sur demande. C'est la solution parfaite pour les artisans comme pour les industriels qui savent ce qu'ils veulent et comment ils le veulent. C'est aujourd'hui le service de production de moules exclusifs en polycarbonate le plus professionnel qui soit disponible sur le marché.

Les options sont infinies ; nous collaborons avec vous pour créer ce moule parfait que vous avez toujours voulu. Avec une quantité minimum de 50 pièces en commande, c'est le moyen idéal pour promouvoir votre propre design.

2. CONCEPT SEMI-EXCLUSIF

Si vous souhaitez personnaliser un moule existant avec votre logo ou votre marque, c'est la solution parfaite et économique pour la même quantité minimum de 50 pièces en commande. Choisissez parmi la gamme sélectionnée de moules que nous pensons être la mieux adaptée à cette fin et ce sera notre point de départ.

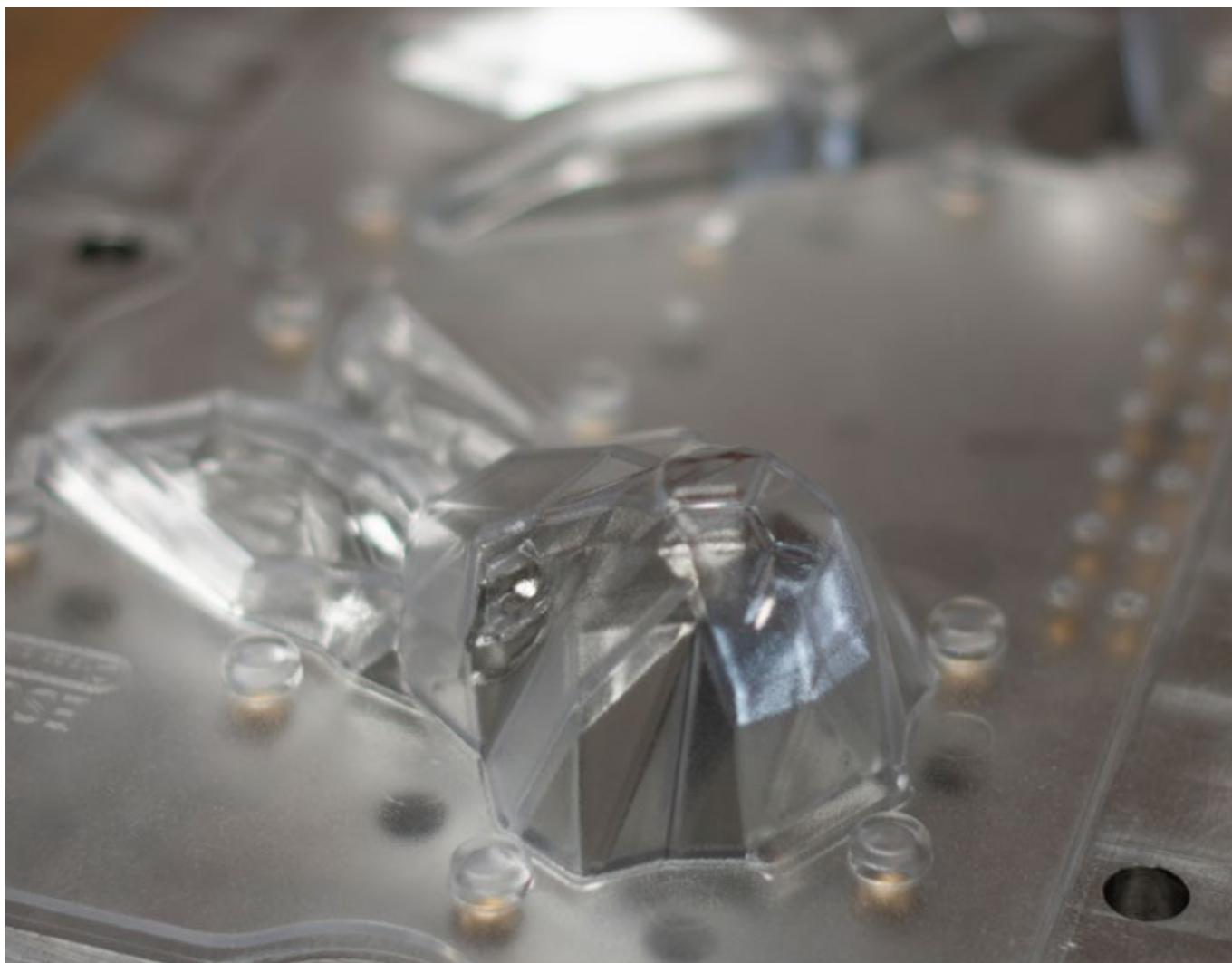
OPTIONS

→ Effets sablés ou polis

Ces effets variés ne sont qu'une question de préférence. Certains chocolats seront beaux avec une finition polie, d'autres seront mieux adaptés à une finition moins brillante. À vous de choisir celle que vous préférez. Ces effets visuels peuvent être appliqués à n'importe quel type d'outillage.


→ Systèmes de centrage


Chez Chocolate World, nous offrons à nos clients l'option de goupilles de centrage afin de garantir que les demi-cavités soient parfaitement alignées.

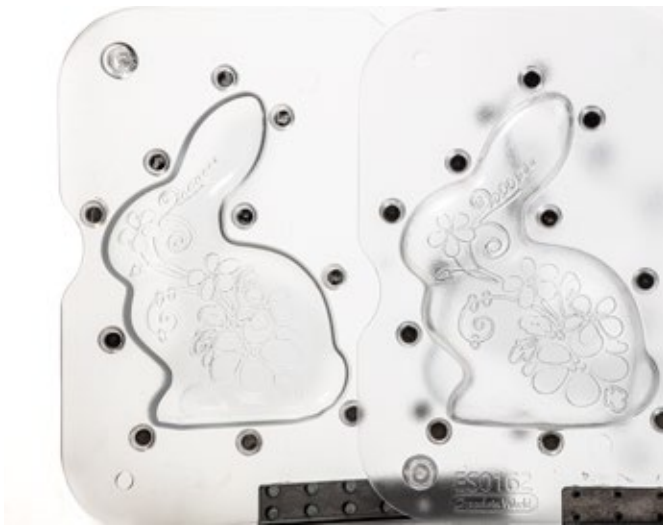


EXCLUSIVE HM MOULDS


 HM moulds, also known as hollow figure hand moulds, are designed to create chocolate figurines. These kinds of moulds are double, available with or without magnets, and have an open base.


 Holgoedvormen zijn ontworpen voor het vervaardigen van chocoladefiguren. Deze vormen zijn tweedelig, verkrijgbaar met of zonder magneten, en hebben een open onderkant.


 Les moules HM, également connus sous le nom de moules creux artisanaux, sont conçus pour créer des figurines en chocolat. Ces moules sont doubles, disponibles avec ou sans aimants et leur base est ouverte.

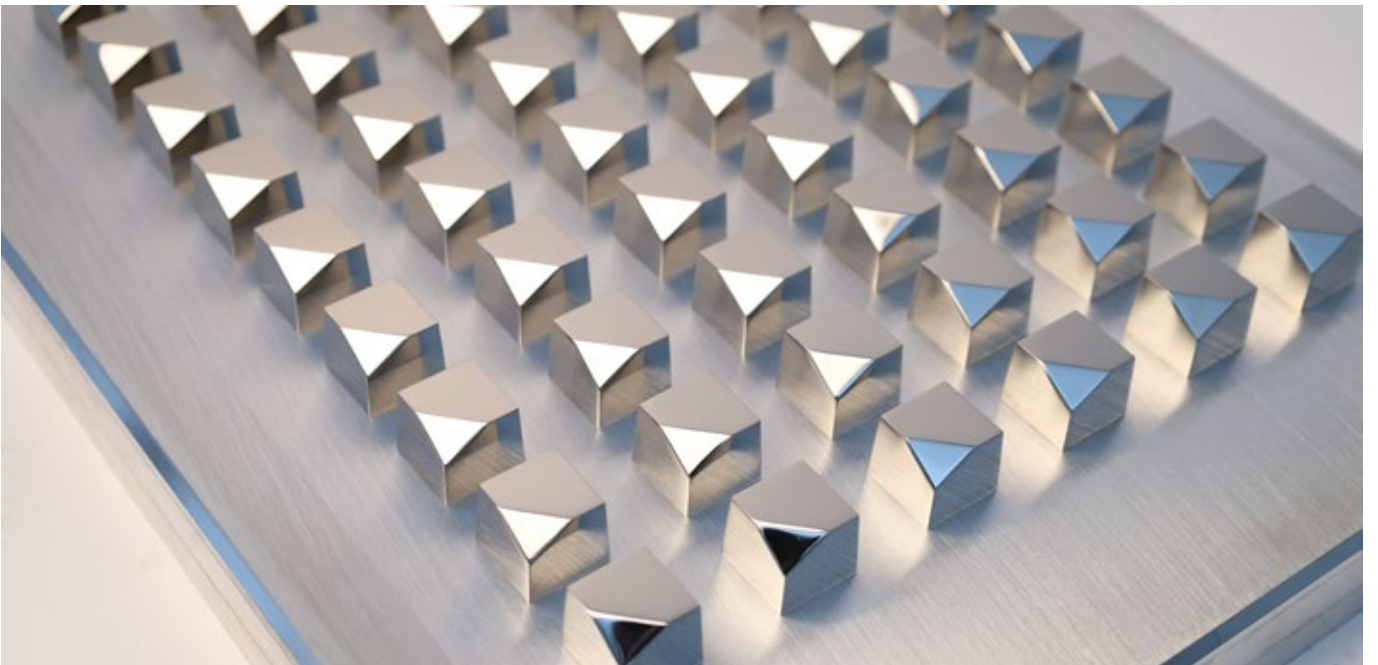
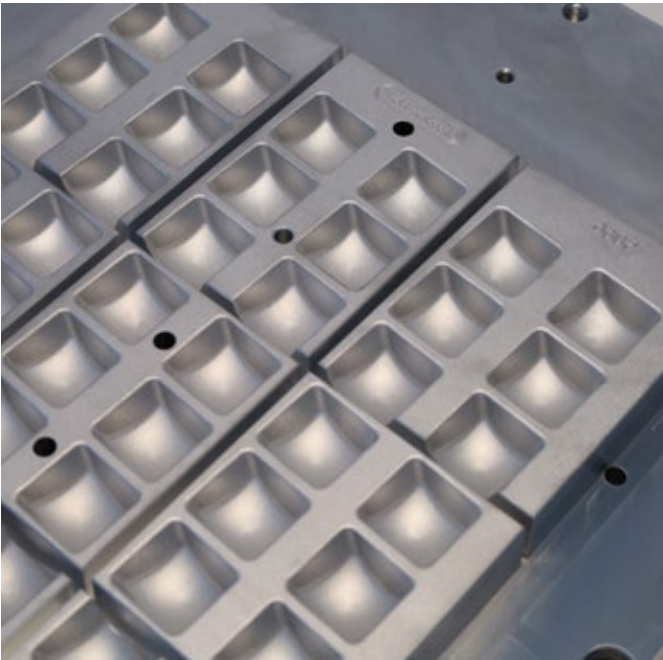


EXCLUSIVE SPINNING MOULDS

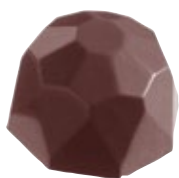
 Hollow figures are mostly seen during the Easter or Christmas periods. For an exact preliminary calculation, and the assurance that every hollow figure has the same weight, a spinning mould is the most suitable solution. The spinning machines can be purchased through our machinery division.

 Holle figuren zijn vooral populair met Pasen of tijdens de kerstperiode. Voor een exacte voorberekening en om ervoor te zorgen dat elke holle figuur even zwaar is, is een holgoedvorm de meest geschikte oplossing. De zwiermolens kunnen worden aangekocht via onze machineafdeling.

 Les figures creuses se rencontrent principalement aux périodes de Pâques ou de Noël. Pour un calcul préliminaire exact et l'assurance d'un poids identique pour chaque figure creuse, un moule centrifugeur est la solution la plus appropriée. Les machines centrifuge peuvent s'acquérir auprès de notre division de machines.



INDUSTRIAL SERIE (380 x 295 x 30 mm)



CW5064

29,10x29,10x21 mm
6x9 pc / 12,80 gr
380x295x30
centres 45x36



CW5065

27x27x18 mm
6x9 pc / 12,30 gr
380x295x30
centres 45x36



CW5066

27x27x19 mm
6x9 pc / 11 gr
380x295x30
centres 45x36



CW5067

23x23x20 mm
6x9 pc / 12 gr
380x295x30
centres 45x36



CW5068

36x22x20 mm
6x9 pc / 15 gr
380x295x30
centres 45x36



CW5069

34,5x29,5x17 mm
6x9 pc / 13,5 gr
380x295x30
centres 45x36



CW5070

29x29x25 mm
6x9 pc / 14,5 gr
380x295x30
centres 45x36



CW5071

34,5x24,5x13 mm
6x9 pc / 10 gr
380x295x30
centres 45x36



CW5072

27,56x 27,56x17,22 mm
6x9 pc / 12,5 gr
380x295x30
centres 45x36



CW5073

27x27x16 mm
6x9 pc / 12 gr
380x295x30
centres 45x36



CW5074

36,5x27,5x16,5 mm
6x9 pc / 10,5 gr
380x295x30
centres 45x36



CW5075

26x26x17,5 mm
6x9 pc / 12 gr
380x295x30
centres 45x36



CW5076

35x21,5x14 mm
6x9 pc / 10,5 gr
380x295x30
centres 45x36



CW5077

25,5x25,5x15 mm
6x9 pc / 9 gr
380x295x30
centres 45x36



CW5078

31x27x16,5 mm
6x9 pc / 9 gr
380x295x30
centres 45x36



CW5079

29x29x25 mm
6x9 pc / 15 gr
380x295x30
centres 45x36

ONE SHOT (275 x 175 mm)



CW2144

39x39x3 mm
4x6 pc / 4 gr
 275x175x24
centers 42,8x41,83



CW2303

35x35x4 mm
4x7 pc / 4 gr
 275x175x24
centers 38x40



CW2054

36x36x4 mm
4x6 pc / 5 gr
 275x175x24
centers 42,6x39,83



CW2059

26x26x12 mm
4x8 pc / 5 gr
 275x175x24
centers 32x41



CW2066

32x22x11 mm
4x8 pc / 2x5 gr
 275x175x24
centers 31,78x40,33



CW2075

31x19x10 mm
4x8 pc / 5 gr
 275x175x24
centers 32x39



CW2084

29x20x10 mm
4x8 pc / 6 gr
 275x175x24
centers 31x40



CW2305

33x22x12 mm
4x8 pc / 7 gr
 275x175x24
 same model as 2331
centers 31,78x39,77



CW2306

26x26x17 mm
4x8 pc / 7 gr
 275x175x24
centers 31,85x39,83



CW2482

42,5x17x15 mm
4x7 pc / 7,6 gr
 275x175x24
 same model as 12038
centers 35x40



CW2470

30x30x15 mm
4x7 pc / 8,5 gr
 275x175x24
 same model as 12024
centers 37x40



CW2481

49x14x12 mm
4x7 pc / 8,5 gr
 275x135x24
 same model as 12034
centers 35x40



CW2056

29x23x14 mm
4x9 pc / 9 gr
 275x175x24
centers 28,81x39,83



CW2322

26x26x20 mm
4x8 pc / 9 gr
 275x175x24
centers 31,78x39,83



CW2435

25,5x25,5x15 mm
4x8 pc / 9 gr
 275x175x24
 same model as 1865
centers 33x40



CW2443

31x27x16,5 mm
4x8 pc / 9 gr
 275x175x24
 same model as 1526
centers 33x40



CW2467

30x30x15 mm
4x7 pc / 2x9 gr
 275x175x24
 same model as 1217
centers 37x40



CW2477

28x21x14,5 mm
4x7 pc / 9 gr
 275x175x24
 same model as 1798
centers 37x40

ONE SHOT (275 x 175 mm)



CW2021

30x30x14 mm
4x6 pc / 10 gr
 275x175x24
centers 42,6x39,83



CW2176

33x20x15 mm
4x8 pc / 10 gr
 275x175x24
 same model as 1334
centers 33x40



CW2227

30x30x16 mm
4x8 pc / 10 gr
 275x175x24
 same model as 1301
centers 32,85x40



CW2230

29x29x19 mm
4x8 pc / 10 gr
 275x175x24
 same model as 1140
centers 33,21x40,16



CW2480

32x32x12,5 mm
4x7 pc / 10 gr
 275x175x24
 same model as 12001
centers 37x40



CW2139

36x24x16 mm
4x8 pc / 11 gr
 275x175x24
 same model as 1327
centers 32x40,66



CW2209

29x29x17 mm
4x8 pc / 11 gr
 275x175x24
 same model as 1290
centers 33,21x40,16



CW2210

28x28x19 mm
4x8 pc / 11 gr
 275x175x24
centers 33,21x40,33



CW2333

34x19x16 mm
4x8 pc / 11 gr
 275x175x24
centers 31,78x39,83



CW2473

33x31x15 mm
4x7 pc / 11 gr
 275x175x24
 same model as 1417
centers 37x40



CW2225

31x31x27 mm
4x7 pc / 12 gr
 275x175x30
 same model as 1047
centers 38x40



CW2263

28x28x22 mm
4x8 pc / 12 gr
 275x175x24
centers 33x40



CW2282

35x26x20 mm
4x8 pc / 12 gr
 275x175x24
 same model as 1026
centers 32,85x39,83



CW2474

30,5x30,5x24 mm
4x7 pc / 12 gr
 275x175x30
 same model as 1926
centers 37x40



CW2231

26x26x18 mm
4x8 pc / 13 gr
 275x175x24
centers 33x40



CW2295

29x29x21 mm
4x8 pc / 13 gr
 275x175x24
centers 31,85x39,83



CW2297

29x26x17 mm
4x8 pc / 13 gr
 275x175x24
centers 31,78x39,83



CW2476

36x29,5x19 mm
4x6 pc / 13 gr
 275x175x24
 same model as 1913
centers 44x40

ONE SHOT (275 x 175 mm)



CW2466

31x31x16,5 mm
4x7 pc / 13,5 gr
 275x175x24
 same model as 1886
centers 37x41



CW2468

34,5x29,5x17 mm
4x6 pc / 13,5 gr
 275x175x24
 same model as 12027
centers 40x44



CW2116

29x29x23 mm
4x8 pc / 14 gr
 275x175x28
centers 33x40,83



CW2130

30x30x19 mm
4x8 pc / 14 gr
 275x175x24
 same model as 1002
centers 33,28x40,16



CW2170

36x33x17 mm
4x8 pc / 14 gr
 275x175x24
 same model as 1096
centers 33,78x40,83



CW2189

32x30x18 mm
4x8 pc / 14 gr
 275x175x24
 same model as 1086
centers 32,85x40



CW2478

29x29x25 mm
4x7 pc / 14,5 gr
 275x175x30
 same model as 12056
centers 37x40



CW2167

33x27x19 mm
4x8 pc / 15 gr
 275x175x24
 same model as 1028
centers 33,28x40,16



CW2168

27x27x25 mm
4x8 pc / 15 gr
 275x175x30
 same model as 1087
centers 33,21x40,33



CW2171

31x31x22 mm
4x8 pc / 15 gr
 275x175x28
 same model as 1094
centers 33,21x40,33



CW2184

31x31x20 mm
4x8 pc / 15 gr
 275x175x24
 same model as 1024
centers 33,35x40,33



CW2471

29x29x25 mm
4x7 pc / 15 gr
 275x175x30
 same model as 1433
centers 37x40



CW2298

33x29x20 mm
4x8 pc / 16 gr
 275x175x24
 same model as 1044
centers 32,85x39,83



CW2472

30x30,53x25 mm
4x7 pc / 17 gr
 275x175x30
 same model as 1157
centers 37x40



CW2228

29x29x32 mm
4x8 pc / 20 gr
 275x175x35
 same model as 2113
centers 33,21x40,16



CW2150

32x32x20 mm
4x6 pc / 24 gr
 275x175x26
centers 40x39,83



CW2280

35x35x30 mm
4x7 pc / 25 gr
 275x175x35
 same model as 1292
centers 37,83x39,83



CW2469

78,5x19x20 mm
3x4 pc / 29 gr
 275x175x24
 same model as 12033
centers 88x40

B SERIE (275 x 205 mm - Height 30 - 35 mm)



CWB0233

25x18x9 mm
4x8 pc / 2x3 gr
 275x205x30
 same model as 1204
centers 48x33



CWB0236

25x25x12,5 mm
4x8 pc / 2x4 gr
 275x205x30
 same model as 1158
centers 48x33



CWB0179

38x20x7 mm
5x6 pc X fig./4,5 gr
 275x205x30
 same model as 1170
centers 26x40



CWB0216

41x30x4 mm
3x8 pc / 5 gr
 275x205x30
 same model as 1446, 2233
centers 65x33



CWB0219

30x26x9 mm
4x8 pc / 2x5 gr
 275x205x30
 same model as 1280, 1314
centers 48x33



CWB0217

49x29x4 mm
3x8 pc / 5,5 gr
 275x205x30
 same model as 1432
centers 65x33



CWB0238

35x23x12 mm
4x8 pc / 2x6 gr
 275x205x30
 same model as 1051
centers 48x33



CWB0239

43x43x5 mm
3x5 pc X fig./6 gr
 275x205x30
 same model as 1048
centers 65x53



CWB0153

35x18x15 mm
5x7 pc / 7 gr
 275x205x30
 same model as 1080, 2338
centers 38,8x38



CWB0220

39x39x8 mm
4x6 pc / 7 gr
 275x205x30
 same model as 1413, 2296
centers 48x44



CWB0218

33x33x11 mm
4x6 pc / 2x7,5 gr
 275x205x30
 same model as 1106, 2175
centers 48x44



CWB0143

37x18x14 mm
5x7 pc / 9 gr
 275x205x30
 same model as 1156, 2026
centers 38,8x35,8



CWB0167

27x27x11 mm
5x7 pc / 9 gr
 275x205x30
 same model as 1355
centers 40x38



CWB0230

39x39x5 mm
4x6 pc / 9 gr
 275x205x30
 same model as 1456
centers 48x44



CWB0134

29x29x19 mm
5x7 pc / 10 gr
 275x205x30
 same model as 2230
centers 40x38



CWB0166

30x30x16 mm
5x7 pc / 10 gr
 275x205x30
 same model as 1301
centers 39x38



CWB0168

36x21x14 mm
5x7 pc / 10 gr
 275x205x30
 same model as 2081
centers 38,75x38



CWB0213

28x28x15 mm
5x7 pc / 10 gr
 275x205x30
 same model as 1336
centers 39x37,5

B SERIE (275 x 205 mm - Height 30 - 35 mm)



CWB0234

53x30x9 mm
3x8 pc X fig./10 gr
 275x205x30
 same model as 1188
centers 65x33



CWB0129

27x27x17 mm
5x7 pc / 11 gr
 275x205x30
centers 40x38



CWB0158

42x27x14 mm
5x6 pc / 2x11 gr
 275x205x30
 same model as 2255
centers 47,8x32,6



CWB0180

36x24x16 mm
5x7 pc / 11 gr
 275x205x30
 same model as 1327
centers 40x38



CWB0221

67x25x10 mm
4x3 pc / 11 gr
 275x205x30
 same model as 1310
centers 48x88



CWB0235

27x22x15 mm
5x7 pc / 11 gr
 275x205x30
 same model as 1219
centers 39x37



CWB0242

32x28x15 mm
5x7 pc / 11 gr
 275x205x30
 same model as 1018
centers 39x37



CWB0121

33x30x16 mm
5x7 pc / 12 gr
 275x205x30
 same model as 1174, 2191
centers 40x38



CWB0131

32x32x13 mm
5x7 pc / 12 gr
 275x205x30
centers 40x38



CWB0169

28x28x21 mm
5x7 pc / 12 gr
 275x205x30
 same model as 1049, 2120
centers 40x38



CWB0225

43x30x14 mm
4x6 pc / 2x12 gr
 275x205x30
 same model as 1317
centers 48x44



CWB0226

35x26x20 mm
5x7 pc / 12 gr
 275x205x30
 same model as 1026
centers 39x37



CWB0237

29x28x17 mm
5x7 pc / 12 gr
 275x205x30
 same model as 1226, 2183
centers 39x33



CWB0117

31x29x19 mm
5x7 pc / 13 gr
 275x205x30
 same model as 1012, 2316
centers 40x38



CWB0120

33x20x21 mm
5x7 pc / 13 gr
 275x205x30
 same model as 1233, 2193
centers 40x38



CWB0122

33x26x16 mm
5x7 pc / 13 gr
 275x205x30
 same model as 1010, 2164
centers 40x38



CWB0141

44x21x18 mm
5x7 pc / 13 gr
 275x205x30
 same model as 1248, 2304
centers 38,8x35,8



CWB0146

39x24x20 mm
5x7 pc / 13 gr
 275x205x30
 same model as 1001, 2195
centers 40x38

B SERIE (275 x 205 mm - Height 30 - 35 mm)



CWB0147

30x27x19 mm
5x7 pc / 13 gr
 275x205x30
 same model as
 1045, 2196
centers 39x37



CWB0174

37x29x16 mm
5x7 pc / 13 gr
 275x205x30
 same model as 1090
centers 40x38



CWB0241

48x18x20 mm
4x8 pc / 13 gr
 275x205x30
 same model as 1173
centers 48x33



CWB0125

35x20x17 mm
5x7 pc / 14 gr
 275x205x30
 same model as
 1082, 2270
centers 40x38



CWB0126

30x30x19 mm
5x7 pc / 14 gr
 275x205x30
 same model as
 1002, 2130
centers 40x38



CWB0145

34x25x21 mm
5x7 pc / 14 gr
 275x205x30
 same model as 1143
centers 38,8x35,8



CWB0175

27x27x18 mm
5x7 pc / 14 gr
 275x205x30
 same model as 1168
centers 40x38



CWB0187

33x25x21 mm
5x7 pc / 14 gr
 275x205x30
 same model as 1225
centers 40x38



CWB0224

35x26x19 mm
5x7 pc / 14 gr
 275x205x30
 same model as 1003
centers 39x37



CWB0248

25x25x25 mm
5x7 pc / 14 gr
 275x205x30
 same model as 1019
centers 39,8x37,7



CWB0118

34x34x15 mm
5x7 pc / 15 gr
 275x205x30
 same model as 1115
centers 40x38



CWB0123

33x27x19 mm
5x7 pc / 15 gr
 275x205x30
 same model as
 1028, 2167
centers 40x38



CWB0127

31x31x21 mm
5x7 pc / 15 gr
 275x205x30
centers 40x38



CWB0137

31x35x18 mm
5x7 pc / 15 gr
 275x205x30
 same model as
 1214, 2087
centers 38,8x35,8



CWB0138

35x29x21 mm
5x7 pc / 15 gr
 275x205x30
 same model as
 1084, 2165
centers 38,8x35,8



CWB0139

31x31x22 mm
5x7 pc / 15 gr
 275x205x30
 same model as
 1094, 2171
centers 38,8x35,8



CWB0140

38x27x16 mm
5x7 pc / 15 gr
 275x205x30
 same model as
 1006, 2132
centers 38,8x35,8



CWB0148

31x35x18 mm
5x7 pc / 15 gr
 275x205x30
 same model as
 1214, 2087
centers 40x38

B SERIE (275 x 205 mm - Height 30 - 35 mm)



CWB0160

35x21x19 mm
5x7 pc / 15 gr
 275x205x30
 same model as 1112
centers 40x38



CWB0210

31x31x20 mm
5x7 pc / 15 gr
 275x205x30
 same model as 1024
centers 40x38



CWB0223

27x27x25 mm
5x7 pc / 15 gr
 275x205x30
 same model as 1087
centers 39x37



CWB0119

33x29x20 mm
5x7 pc / 16 gr
 275x205x30
 same model as 1044, 2298
centers 40x38



CWB0171

37x31x20 mm
5x7 pc / 16 gr
 275x205x30
 same model as 1089
centers 39x36,2



CWB0124

29x29x20 mm
5x7 pc / 17 gr
 275x205x30
 same model as 1036, 2135
centers 40x38



CWB0128

21x34x27 mm
5x7 pc / 17 gr
 275x205x30
centers 40x38



CWB0133

37x32x14 mm
5x7 pc / 17 gr
 275x205x30
 same model as 1131
centers 38,8x35,8



CWB0229

56x32x24 mm
4x6 pc / 20 gr
 275x205x30
 same model as 1193
centers 48x44



CWB0228

49x28x15 mm
3x8 pc / 21 gr
 275x205x30
 same model as 1483
centers 65x33



CWB0177

74x20x15 mm
6x3 pc / 23 gr
 275x205x30
 same model as 1275
centers 25,8x85,1



CWB0232

74x20x15 mm
2x6 pc / 23 gr
 275x205x30
 same model as 1275
centers 96x44



CWB0222

35x35x30 mm
4x6 pc / 25 gr
 275x205x30
 same model as 1292
centers 48x44



CWB0197

59x27x21 mm
4x6 pc / 28 gr
 275x205x30
 same model as 1228, 2312
centers 48x43



CWB0202

128x27x13 mm
6x2 pc / 38 gr
 275x205x30
 same model as 2010
centers 40x131



CWB0215

113x28x13 mm
4x2 pc / 44 gr
 275x205x30
 same model as 1442, 2019
centers 48x132



CWB0176

125x30x13 mm
5x2 pc / 50 gr
 275x205x30
 same model as 1132
centers 40x131



CWB0227

118x28x17 mm
4x2 pc / 58 gr
 275x205x30
 same model as 1458
centers 48x133

B SERIE (275 x 205 mm - Height 30 - 35 mm)



CWB0182

156x77x8 mm
1x3 pc / 80 gr
275x205x30
same model as 2110
centers 87,5



CWB0181

155x77x9 mm
1x3 pc / 139 gr
275x205x30
same model as 2162
centers 87,5

C SERIE (300 x 205 x 30 mm)



C0117

35x33x11 mm
3 x 7 pc / 2x8,6 gr
 300x205x30
 Double mould
 same model as 1513
centres 48,5x36



C0118

39x30x6 mm
3 x 7 pc / 7 gr
 300x205x30
 same model as 1278
centres 48x36



C0119

30x27x19 mm
4 x 8 pc / 13 gr
 300x205x30
 Same model as 1045,
 2196
centres 33x36



C0120

39x35x13 mm
3 x 6 pc / 11 gr
 300x205x30
 3 fig.
 same model as 1502
centres 48,4x41,4



C0121

31x39x18 mm
3 x 7 pc / 16 gr
 300x205x30
 same model as 1470
centres 48,3x36,5



C0122

40x35x10 mm
3 x 7 pc / 10 gr
 300x205x30
 same model as 1104
centres 48,6x36,5



C0123

37x28x20 mm
3 x 8 pc / 16 gr
 300x205x30
 3 fig.
 same model as 1507
centres 48,4x36,5



C0124

42x26x14 mm
3 x 7 pc / 12-12-13 gr
 300x205x30
 3 fig.
 same model as 1464
centres 48,4x36,5



C0126

Ø29x19 mm
4 x 8 pc / 10 gr
 300x205x30
 Same model as
 1140, 2230
centres 48,4x36,4

D SERIE (300 x 225 x 30 mm)



D0105

Ø49x4 mm
4x5 pc / 9 gr
300x225x30
same model as 1077
centres 53x55



D0106

Ø35x21 mm
4x8 pc / 16 gr
300x225x30
same model as 1037
centres 50x36



D0107

31x28x16 mm
4x8 pc / 11 gr
300x225x30
1057, 2243
centres 50x36



D0108

35x29x21 mm
4x8 pc / 15 gr
300x225x30
same model as 1084, 2165
centres 50x36



D0109

35x30x21 mm
4x8 pc / 16 gr
300x225x30
same model as 1105, 2190
centres 50x36



D0110

32x24x20 mm
4x8 pc / 13 gr
300x225x30
1134, 2293
centres 50x36



D0111

36x28x17 mm
4x8 pc / 13 gr
300x225x30
same model as 1192
centres 50x36



D0112

30x36x19 mm
4x8 pc / 14 gr
300x225x30
same model as 1218
centres 50x36



D0113

36x22x20 mm
4x8 pc / 15 gr
300x225x30
same model as 1025, 2160, 2325
centres 50x36



SPINNING MOULDS



ES0125CW

2x4 pc 4 fig.
425x250x0
double model
recto/verso



ES0129CW

231x137x139 mm
1x2 pc
450x250x160



ES0134CW

125x95x200 mm
1x2 pc
450x250x88
double model
recto/verso



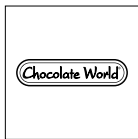
ES0142CW

2x6 pc 2 fig.
425x300x60
double model
recto/verso

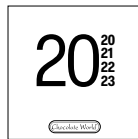


ES0152CW

135x87x42,5 mm
2x2 pc
425x310x90
double model



MOULDS



MOULDS



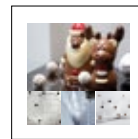
EQUIPMENT



**CHOCOLATE
CONCEPT**



MACHINERY



**HOLLOW
FIGURES**



**BELGIAN
CHOCOLATE
SCHOOL**

SMALLANDLAAN 4 UNIT 2 • 2660 HOBOKEN, ANTWERPEN • BELGIUM

TEL: +32 (0)3 216 44 27 • FAX: +32 (0)3 216 98 33

INFO@CHOCOLATEWORLD.BE • CHOCOLATEWORLD.BE

