

Chocolate World®



FRAME MOULDS



CODE	CW1621
Length	39 mm
Width	10 mm
Height	10 mm
Weight	2x4,5 gr
Lay-out	2x10 pc diff. fig.
Mould	275x135x24 mm
Properties	double model r/v



CODE	CW1775
Length	28,5 mm
Width	5 mm
Height	5 mm
Weight	4,5 gr
Lay-out	3x7 pc
Mould	275x135x24 mm



CODE	CW1684
Length	34 mm
Width	4,5 mm
Height	4,5 mm
Weight	5 gr
Lay-out	3x7 pc
Mould	275x135x24 mm



CODE	CW1779
Length	38,5 mm
Width	17,5 mm
Height	17,5 mm
Weight	12,5 gr
Lay-out	3x5 pc
Mould	275x135x24 mm



CODE	CW1849
Length	34 mm
Width	11,5 mm
Height	11,5 mm
Weight	15 gr
Lay-out	3x6 pc
Mould	275x135x24 mm



CODE	CW1791
Length	49 mm
Width	21,5 mm
Height	21,5 mm
Weight	15,5 gr
Lay-out	2x7 pc
Mould	275x135x30 mm



CODE	CW1790
Length	49 mm
Width	19 mm
Height	19 mm
Weight	16,5 gr
Lay-out	3x6 pc
Mould	275x135x24 mm

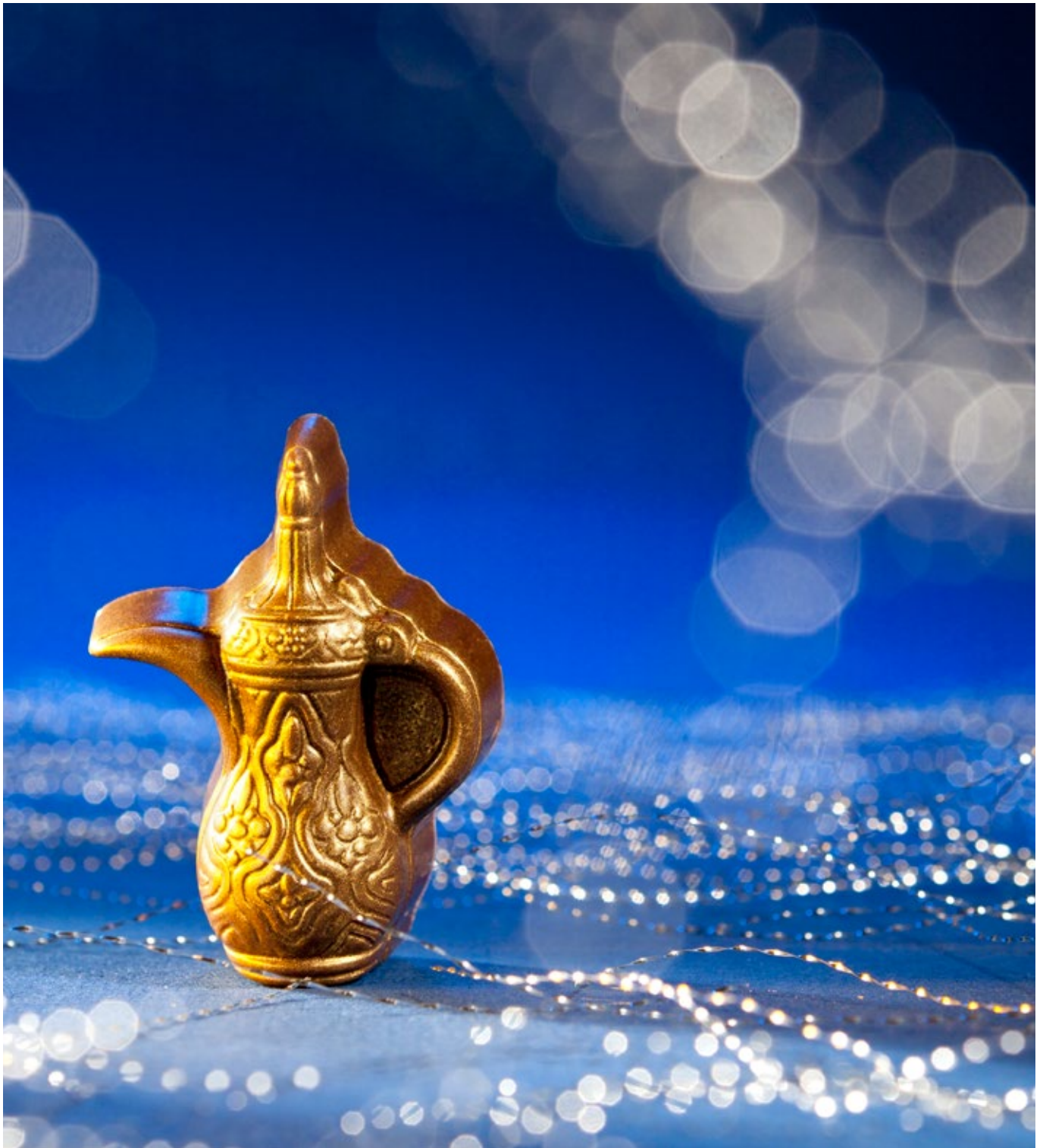


CODE	CW1667
Length	125 mm
Width	7 mm
Height	7 mm
Weight	47 gr
Lay-out	2x2 pc
Mould	275x135x24 mm



CODE	CW1747
Length	99,5 mm
Width	7 mm
Height	7 mm
Weight	91 gr
Lay-out	2x1 pc
Mould	275x135x24 mm

FRAME MOULDS



CODE CW1781

Length 42,5 mm

Width 18,5 mm

Height 18,5 mm

Weight 10,5 gr

Lay-out 2x7 pc

Mould 275x135x24 mm



CODE	CW1886
Length	31 mm
Width	16,5 mm
Height	16,5 mm
Weight	13,5 gr
Lay-out	3x7 pc
Mould	275x135x24 mm

CODE	CW2466
Length	31 mm
Width	16,5 mm
Height	16,5 mm
Weight	13,5 gr
Lay-out	4x7 pc
Mould	275x175x24 mm

FRAME MOULDS





CODE CW1787

Length 30,5 mm

Width 19,5 mm

Height 19,5 mm

Weight 14,5 gr

Lay-out 3x7 pc

Mould 275x135x24 mm



CODE CW1788

Length 30,5 mm

Width 19 mm

Height 19 mm

Weight 12 gr

Lay-out 3x7 pc

Mould 275x135x24 mm



CODE CW1793

Length 26 mm

Width 23,5 mm

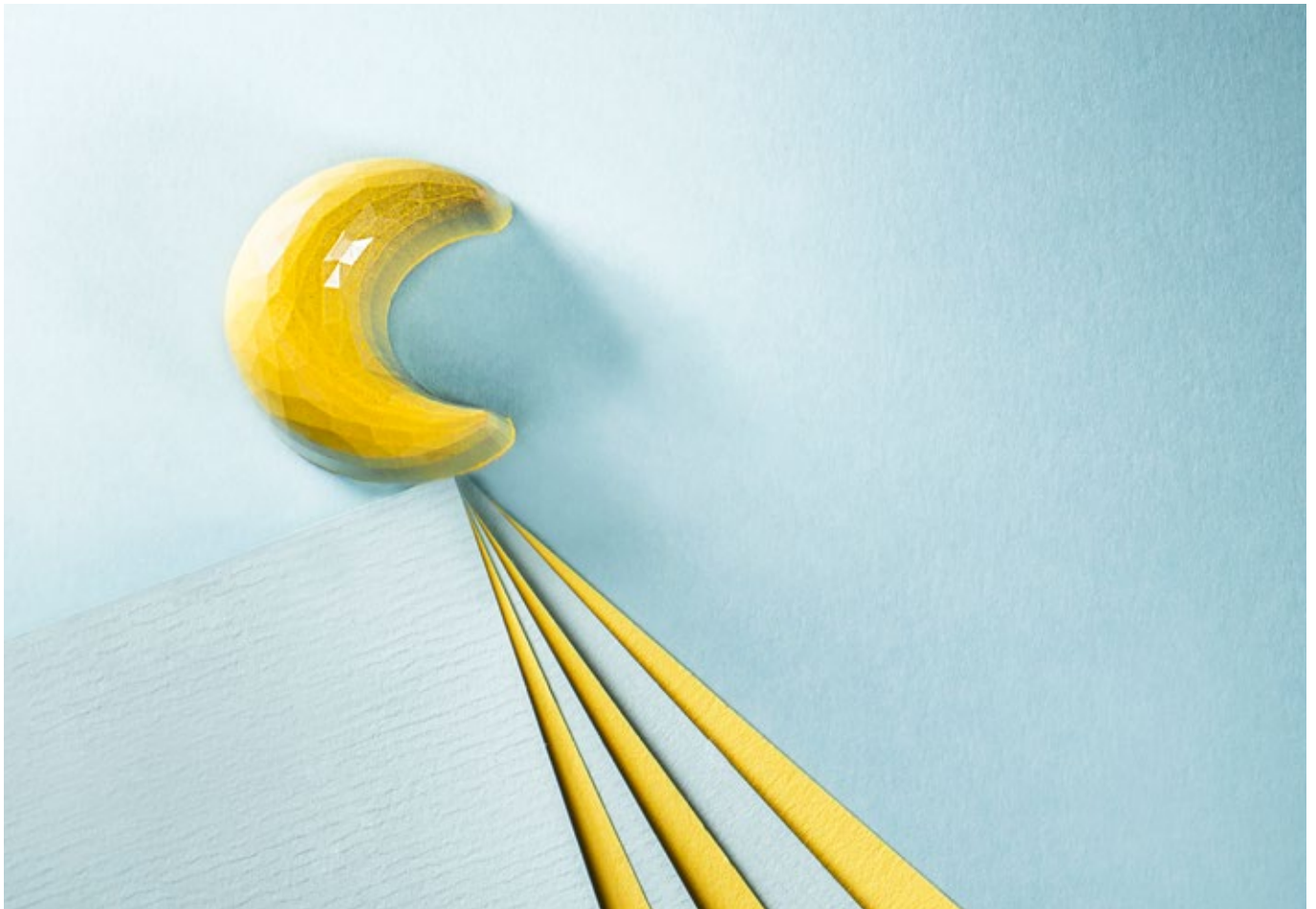
Height 23,5 mm

Weight 9,5 gr

Lay-out 3x8 pc

Mould 275x135x28 mm

FRAME MOULDS





CODE CW1935

Length	35 mm
Width	16,5 mm
Height	16,5 mm
Weight	11 gr
Lay-out	3x7 pc
Mould	275x135x24 mm



CODE CW1922

Length	35,5 mm
Width	17 mm
Height	17 mm
Weight	12 gr
Lay-out	3x7 pc
Mould	275x135x24 mm

CHOCOLATE WORLD STAMP



Stamps for decorating your chocolate.
Cool in freezer before use.

- Dimensions: Ø 30 mm - H: 93 mm
- ± 90 gr

- 100% food grade



STAMP006

Stamp Eid Mubarak



Decorate your chocolate with these colorful, pre-printed transfers!
Learn more about how to use transfer sheets and magnet moulds in our blog.

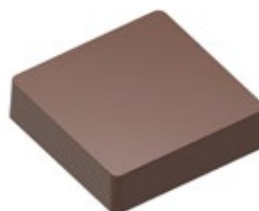


CODE LF032916

60 Sheets per package

Fits magnetic mould CW2000L03

E171 free



CODE CW2000L03

Length 39 mm

Width 40 mm

Height 9 mm

Weight 16 gr

Lay-out 3x4

Mould 275x175x24 mm

MAGNETIC MOULDS



CODE CW1000L01

Length	275 mm
Width	135 mm
Height	24 mm
Weight	13,5 gr
Lay-out	3x5
Mould	35x28x14 mm



CODE CW1000L02

Length	275 mm
Width	135 mm
Height	24 mm
Weight	9,5 gr
Lay-out	4x6
Mould	24x24x14 mm



CODE CW1000L03

Length	275 mm
Width	135 mm
Height	24 mm
Weight	22 gr
Lay-out	2x5
Mould	50x50x10 mm



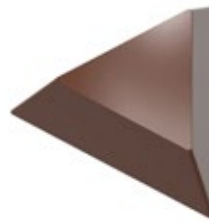
CODE CW1000L04

Length	275 mm
Width	135 mm
Height	24 mm
Weight	13 gr
Lay-out	3x5
Mould	32x32x14 mm



CODE CW1000L10

Length	275 mm
Width	135 mm
Height	24 mm
Weight	9 gr
Lay-out	3x6
Mould	32x24x11 mm



CODE CW1000L11

Length	275 mm
Width	135 mm
Height	24 mm
Weight	13 gr
Lay-out	3x4
Mould	46x40x15 mm



CODE CW1000L13

Length	275 mm
Width	135 mm
Height	24 mm
Weight	11 gr
Lay-out	3x6
Mould	30x32x15 mm



CODE CW1000L16

Length	275 mm
Width	135 mm
Height	24 mm
Weight	32 gr
Lay-out	2x2
Mould	85x55x6 mm



CODE CW1000L17

Length	275 mm
Width	135 mm
Height	24 mm
Weight	7 gr
Lay-out	3x6
Mould	32x32x7 mm



CODE CW1000L19

Length	275 mm
Width	135 mm
Height	24 mm
Weight	9 gr
Lay-out	3x5
Mould	29x29x9 mm

MAGNETIC MOULDS



CODE CW1000L20

Length 275 mm

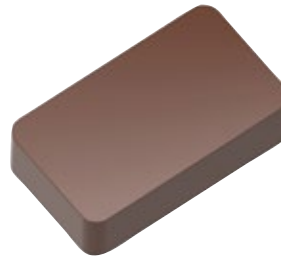
Width 135 mm

Height 24 mm

Weight 12 gr

Lay-out 3x6

Mould 23x23x20 mm



CODE CW1000L30

Length 275 mm

Width 135 mm

Height 24 mm

Weight 11 gr

Lay-out 3x4

Mould 41x24x10 mm



CODE CW1000L32

Length 275 mm

Width 135 mm

Height 24 mm

Weight 37,29 gr

Lay-out 1x2

Mould 84,5x84,5x6 mm



CODE CW1000L42

Length 275 mm

Width 135 mm

Height 24 mm

Weight 11,5 gr

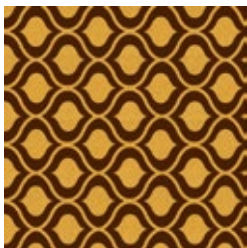
Lay-out 1x14

Mould 30x30x11 mm

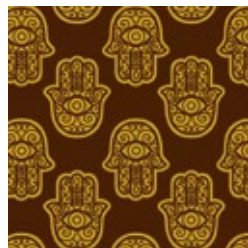
TRANSFER SHEETS

Decorate your chocolate with these colorful, pre-printed transfers!
Learn more about how to use transfer sheets and magnet moulds in our blog.

- 60 Sheets per package
- E171 free

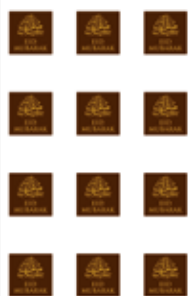


CODE LF032917



CODE LF032923

- 60 Sheets per package
- Fits magnetic mould CW2000L03
- E171 free



CODE LF032916

COLOURS



M1193-G
Gold flakes 23 carat 1 gr



M1194-G
Gold powder 23 carat 1 gr



M1195
Gold leaf machine - with roll +/- 21 m



M1197
Gold leaf machine (without roll)



M1196
Goldroll extra +/- 21 m



M1198GOLD
Gold sheets 23 ca.
80 x 80 mm
25 pcs



M1198-T
Transfers sheets gold 23 carat
25 pcs



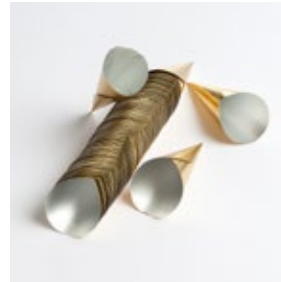
VAGO

Aluminium gold sheets
 per 500 gr
 ± 4500 pcs
 ± 80 x 80 mm
 Other dimensions on request



VC0101

Aluminium cup gold
 Ø bottom: 23 mm
 Ø top: 35 mm
 Height: 20 mm
 1250 pcs



VC0106

Aluminium gold cups - cones
 Ø top: 25 mm
 Height: 55 mm
 1000 pcs



VV0209

Box with magnetic clasp.
 Set consisting of:
 Black boxes
 Gold-coloured cardboard blisters
 Insulation pads
 Box size: 181 x 175 x 36 mm
 25 pcs



VV0216

Box with magnetic clasp.
 Set consisting of:
 Black boxes
 Gold-coloured cardboard blisters
 Insulation pads
 Box size: 100 x 90 x 36 mm
 100 pcs



VV0203

Set consisting of:
 Cardboard boxes: white lid with PVC window + white bottom
 Box size: 230 x 155 x 28 mm
 100 pcs

Black blisters for standard chocolates
 15 cavities
 Size of the cavities 35 x 35 x 15 mm
 100 pcs

Plano delivered



VV0220

Set consisting of:
 Cardboard boxes: white lid with PVC window + white bottom
 Box size: 162 x 162 x 30 mm
 100 pcs

Black blisters for standard chocolates
 9 cavities
 Size of the cavities 35 x 35 x 15 mm
 100 pcs

Plano delivered

INDEX

CODE	PAGE	CODE	PAGE	CODE	PAGE	CODE	PAGE
1000SERIE		MAGNETIC MOULDS		COLOURS		PACKAGING	
CW1621.....	1	CW1000L01.....	10	M1195.....	12	VAGO.....	13
CW1667.....	1	CW1000L02.....	10	M1196.....	12	VC0101.....	13
CW1684.....	1	CW1000L03.....	10	M1197.....	12	VC0106.....	13
CW1747.....	1	CW1000L04.....	10	M1193-G.....	12	VV0203.....	13
CW1775.....	1	CW1000L10.....	10	M1194-G.....	12	VV0209.....	13
CW1779.....	1	CW1000L11.....	10	M1198GOLD.....	12	VV0216.....	13
CW1781.....	2	CW1000L13.....	10	M1198-T.....	12	VV0220.....	13
CW1787.....	5	CW1000L16.....	10				
CW1788.....	5	CW1000L17.....	10	STAMPS			
CW1790.....	1	CW1000L19.....	10	STAMP006.....	8		
CW1791.....	1	CW1000L20.....	11				
CW1793.....	5	CW1000L30.....	11				
CW1849.....	1	CW1000L32.....	11				
CW1886.....	3	CW1000L42.....	11				
CW1922.....	7						
CW1935.....	7	CW2000L03.....	9				
2000SERIE		TRANSFER SHEETS					
CW2466.....	3	LF032916.....	9, 11				
		LF032917.....	11				
		LF032923.....	11				



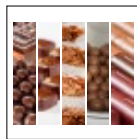
MOULDS



MOULDS



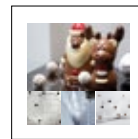
EQUIPMENT



**CHOCOLATE
CONCEPT**



MACHINERY



**HOLLOW
FIGURES**



**BELGIAN
CHOCOLATE
SCHOOL**

SMALLANDLAAN 4 UNIT 2 • 2660 HOBOKEN, ANTWERPEN • BELGIUM

TEL: +32 (0)3 216 44 27 • FAX: +32 (0)3 216 98 33

INFO@CHOCOLATEWORLD.BE • CHOCOLATEWORLD.BE

